



Snowflake

Design by Susanna IC

This generously sized shawl is inspired by the fascinating shapes of snowflakes, each different and unique. A cross between a shawl and a scarf, this unique wrap can be worn in many different ways.

It is knitted in one piece starting with the cast on at the bottom edge of the lace followed by a set of simple stockinette short rows, which give the piece its elegant crescent form. Bulky yarn makes this a quick-to-finish project while the textured lace pattern keeps the knit interesting. Solid colored yarn will show off the texture of the knit and purl combination lace to best advantage.

Finished Size: One Size

Width: 19in / 48cm

Length: 92in / 230cm

Note: Measurements taken after blocking.

Yarn: Any bulky weight yarn; the original was knitted with Bergere de France Natura, 50% alpaca, 50% wool, 50g / 40m / 44yd, color Azurite, 10 balls

Gauge: 10 sts & 16 rows = 4in / 10cm in stockinette st, blocked

Note: Correct gauge is not critical for this project, but your final measurements and yardage requirements may vary if your gauge is different.

Needles: US10 / 6.0 mm 32in / 80 cm long or longer circular needle

Notions: Stitch markers (optional), yarn needle, blocking pins

Pattern Notes:

Loose CO is essential for successful project; go up one needle size if your CO is usually tight. Also, simple or twisted loop COs work well with this lace edge and eliminate the guesswork of leaving a long-enough tail for CO.

All wrong side rows are purled.

Centered Double Decrease:

Insert right needle into front of the next two stitches from left to right, slip the stitches together off the left needle. Knit the next stitch. With the left needle pass the two slipped stitches over the knit stitch and off the needle. (Sl2 as if to knit, k1, pss0)

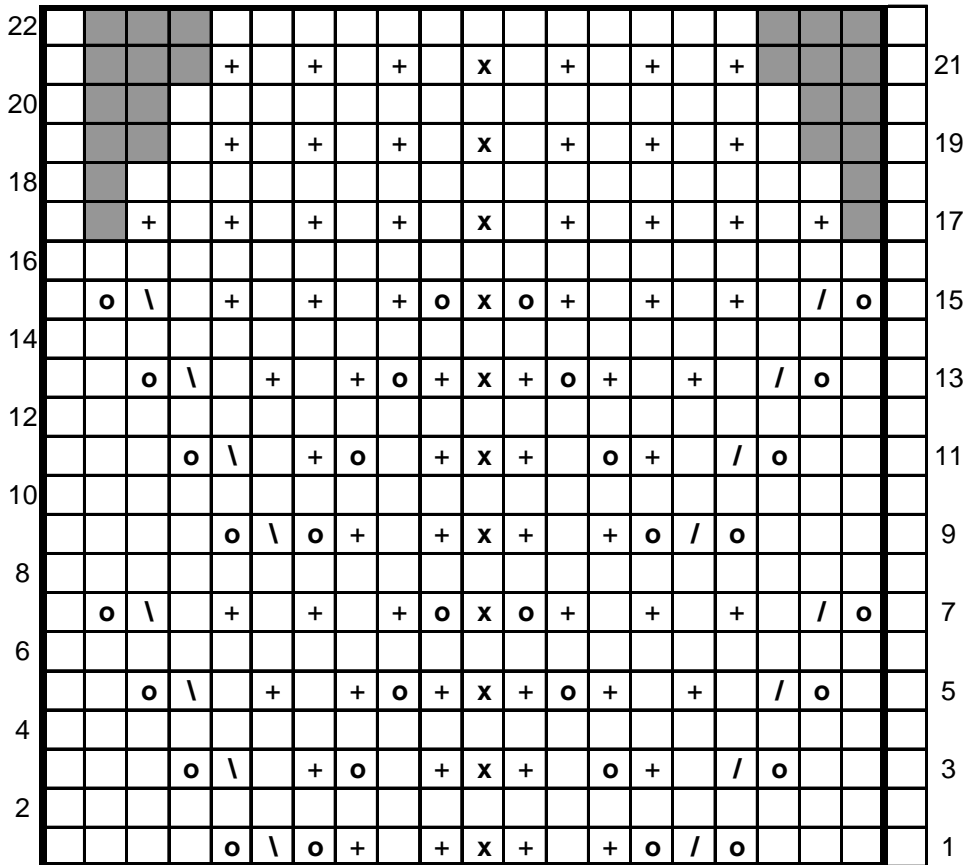
Shawl:

Cast on 261 sts very loosely. Complete lace chart row 1 – 22 (13 pattern repeats). The width of the shawl can be customized by simply adding extra repeats of Rows 9 – 16 before continuing with row 17. Each repeat will add another lace chevron to the finished project; the original shawl is three chevrons wide. Start stockinette short row section: K 99, turn. P15, turn. K14, ssk, k6, turn. P20, p2tog, p6, turn. K26, ssk, k6, turn. P32, p2tog, p6, turn. Continue short rows as established, always using ssk or p2tog to close the short row gap and then working additional 6 sts before turning, until all sts have been worked. Bind off row: *p2tog, return stitch to left needle* rep to end.

Finishing:

Weave in all ends leaving the tails intact. Soak shawl in cool water for at least 20 minutes. Gently squeeze out the excess water, stretch and pin into a crescent shape as shown. Start with the two short sides followed by the lace center point, then pin out the rest of the points along the edge. Trim the yarn tails after the shawl is completely dry.

Snowflake Lace:



- | | | | |
|--------------------------|-------------------|--------------------------|-----------------------------|
| <input type="checkbox"/> | knit RS / purl WS | <input type="checkbox"/> | yo |
| + | purl | x | sl2 as if to knit, k1, pss0 |
| \ | ssk | ■ | no stitch |
| / | k2tog | □ | pattern repeat |

Blocking Schematic:

